

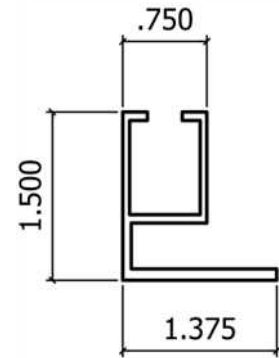
## CLEANROOM CEILING GRID SYSTEM

### *Description*

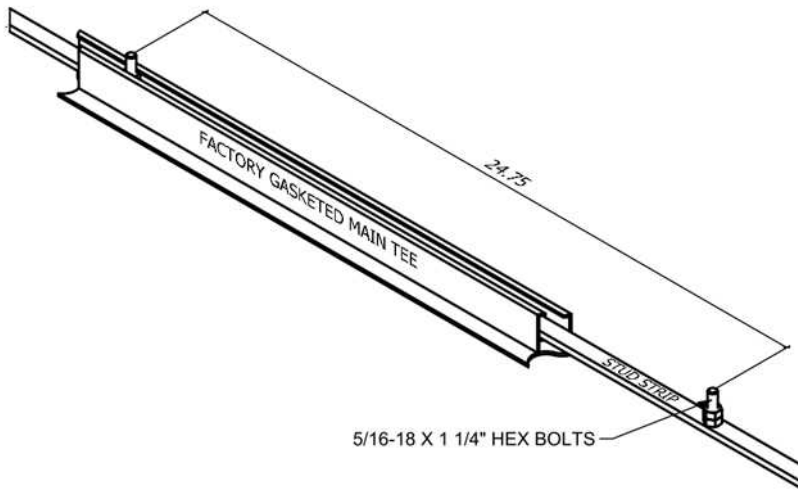
- Heavy duty 2" wide T-bar
- Factory gasketed with closed cell foam
- Constructed of anodized aluminum, 6061-T6
- 2' x 4' grid to be populated with lights, filters and lay-in tiles

### *Installation Overview*

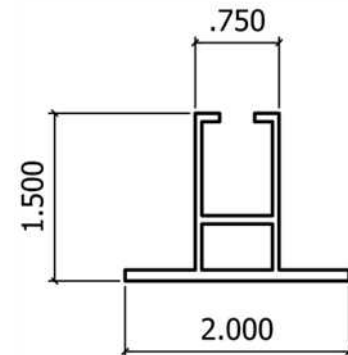
- Suspended with threaded rod and turnbuckles from existing structure
- Typical support spacing of 4' x 4' o.c. nominal
- Factory fabricated stud strips allow quick and easy installation
- Stud strips slide into mains and wall angle, instantly locating tee locations



WALL START



MAIN WITH STUD STRIP



MAINS AND CROSS TEES



**Paul Woolley**  
1151 Pittsford-Victor Road  
Pittsford, NY 14534  
(518) 275-8839  
paul@empire-tech.net

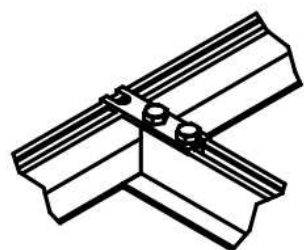
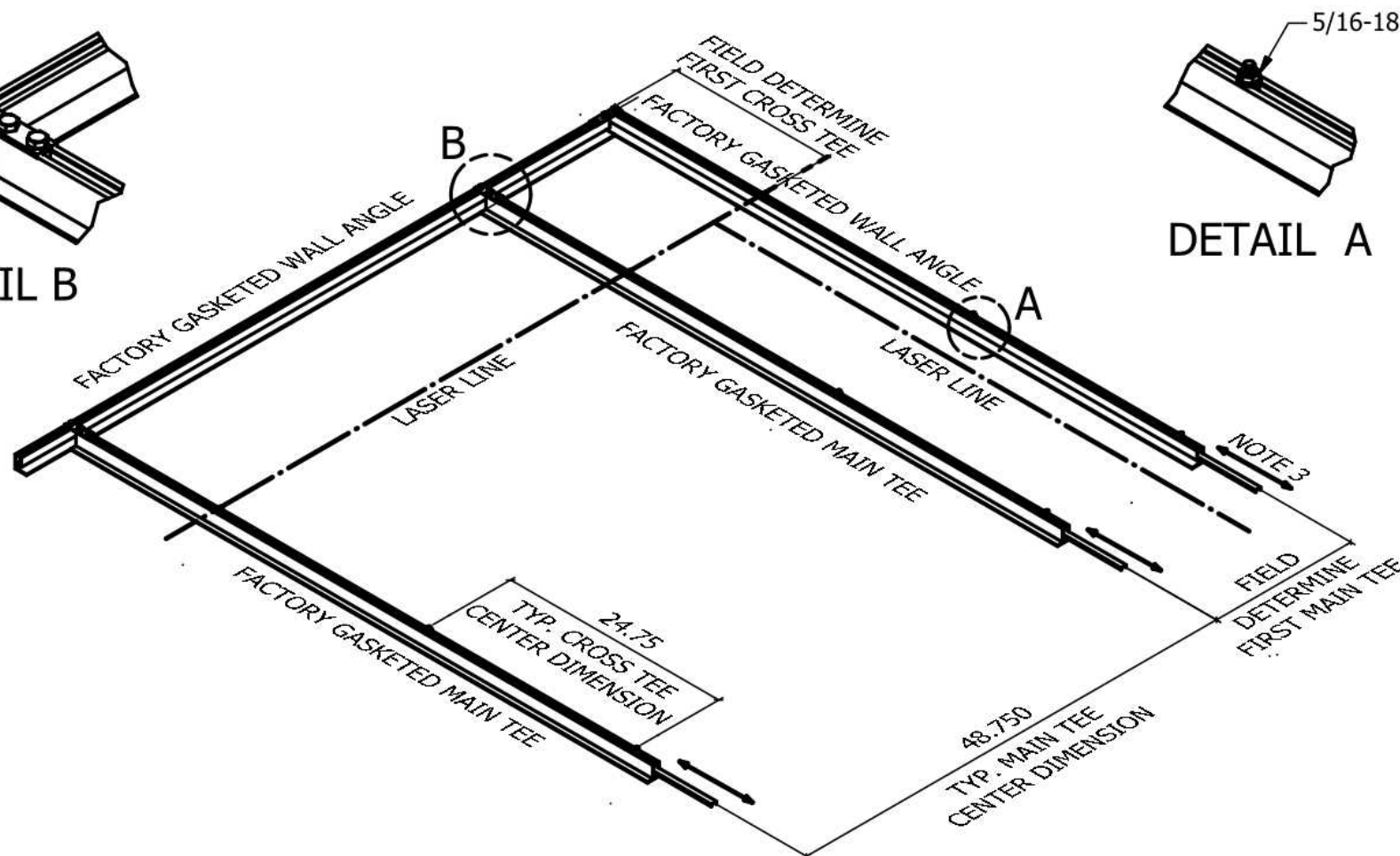
## CLEANROOM CEILING GRID

GENERAL REFERENCE ONLY.  
RIGHT RESERVED TO MAKE CHANGES WITHOUT NOTICE.

PAGE  
1 of 3

**WALL START AND MAIN TEE INSTALLATION INSTRUCTIONS:**

- 1) INSTALL WALL ANGLE FOR ENTIRE PERIMETER OF THE ROOM
- 2) INSTALL AND LEVEL ALL MAIN TEES USING PROVIDED TURNBUCKLE ASSEMBLIES
- 3) SLIDE THE STUD STRIP AT THE WALL START TO ITS DESIRED LOCATION AND TIGHTEN NUT AT DETAIL A
- 4) SET UP A LASER TO "SHOOT" A LINE PARALLEL TO THE WALL START AND PERPENDICULAR TO THE FIRST STUDS AS SHOWN
- 5) LINE UP THE FIRST STUD ON EACH MAIN TEE WITH THE LASER MARK AND TIGHTEN EACH NUT ON THE STUD STRIP.
- 6) THE CEILING IS NOW READY FOR CROSS TEE INSTALLATION

**DETAIL B****DETAIL A**

**Paul Woolley**  
1151 Pittsford-Victor Road  
Pittsford, NY 14534  
(518) 275-8839  
paul@empire-tech.net

**CLEANROOM CEILING GRID**

GENERAL REFERENCE ONLY.  
RIGHT RESERVED TO MAKE CHANGES WITHOUT NOTICE.

PAGE  
2 of 3

### CROSS TEE INSTALLATION INSTRUCTIONS:

- 1) INSTALL THE "MAIN SLIDER" OVER EACH STUD ON THE MAIN TEES AND WALL STARTS AS SHOWN IN THE DETAIL.
- 2) SET THE CROSS TEES OVER THE STUDS AND USE THE PROVIDED 5/16-18 FLANGE NUTS TO SECURE.

NOTE: THE MAIN SLIDER IS DESIGNED TO DRAW THE CROSS TEE TO THE MAIN TEE ELIMINATING GAPS.

